

# NoMa Parks Foundation



Community Conversation  
June 18, 2015





# Community Conversation: Purpose

- Update residents about the NoMa Parks Foundation and planning process
- Share details and get feedback about several parks projects



# Agenda

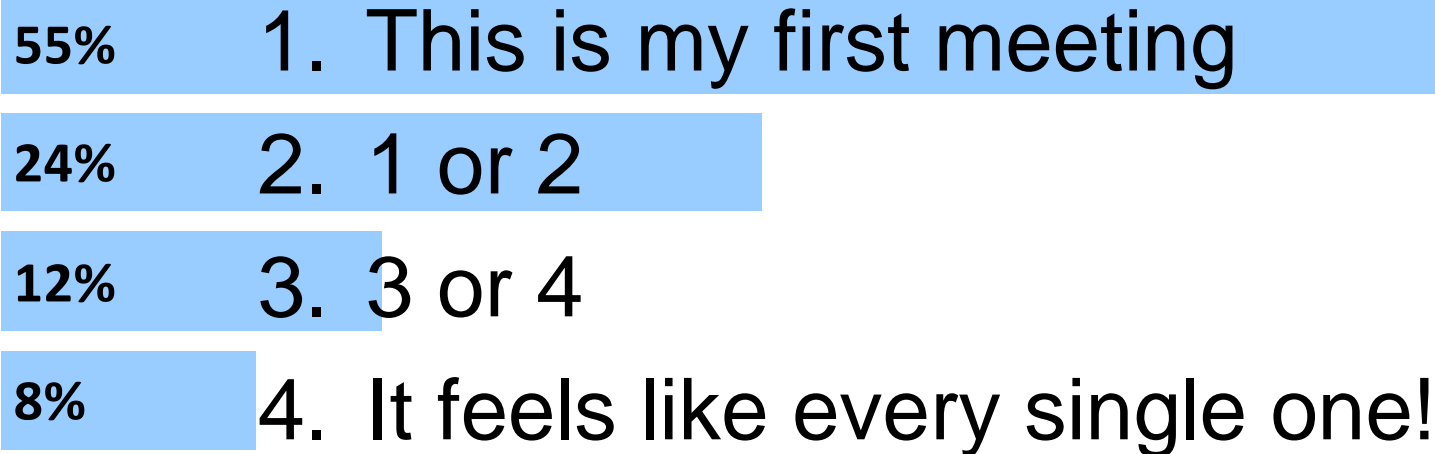
- **Table Introductions and Opening Polling**
- **Overview of the NoMa Public Realm Design Plan and Update on NoMa Parks and NoMa Foundation**
  - Presentation
  - Q&A
  - Table Conversation on the Presentation
- **Location and Current Status of NoMa Park Projects**
  - Presentation
  - Table Conversation on Overall Park Projects
  - Conversations at 4 Project 'Stations'
- **Next Steps**

# What best describes your relationship to NoMa?

- 40% 1. I live in NoMa
- 10% 2. I work in NoMa
- 13% 3. I live and work in NoMa
- 38% 4. I don't live or work in NoMa but am interested in the neighborhood



# How many meetings have you attended in the last 4 years about NoMa parks?



# How much have you heard about the plan to create parks and public spaces in NoMa over the next few years?

15% 1. I have not heard about it until now

21% 2. I know only a little bit about it

46% 3. I have heard about it and know basic info

19% 4. I've heard a lot and am familiar with the plan



# Historically, part of NoMa was called:

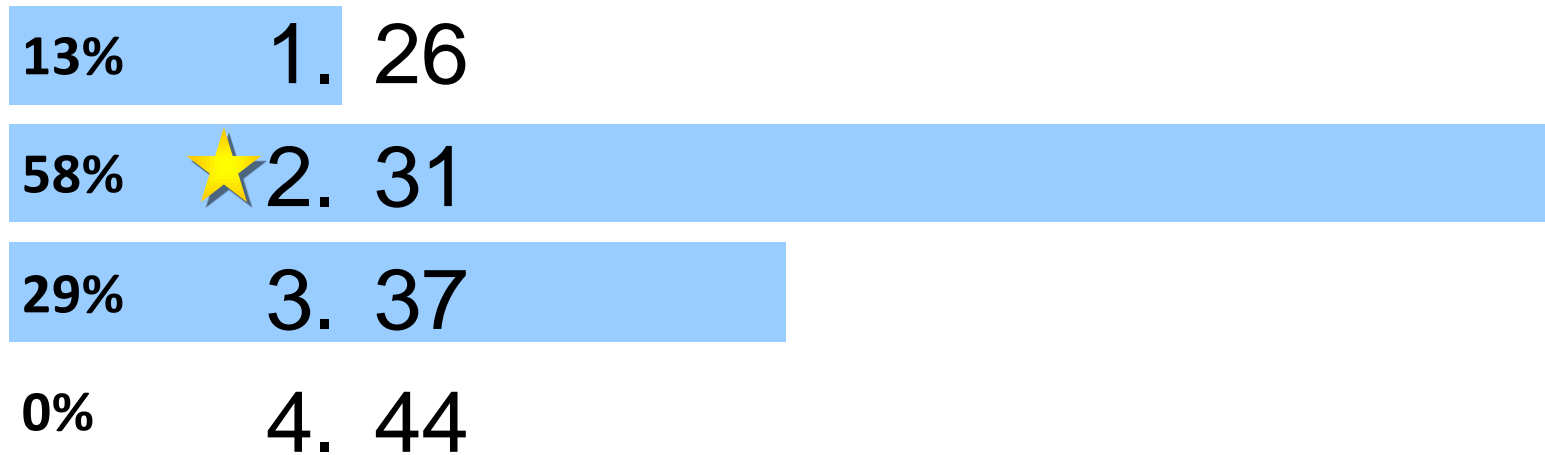
67% ★ 1. Swampoodle

15% 2. Uline

8% 3. Truxtonville

10% 4. Gonzaga

# The average age of people who live in NoMa is approximately:





# Approximately how many residents live within a half-mile of First and M Streets, NE?

19% 1. 12,000

26% 2. 15,000

32% ★ 3. 18,000

23% 4. 23,000



# NoMa Neighborhood

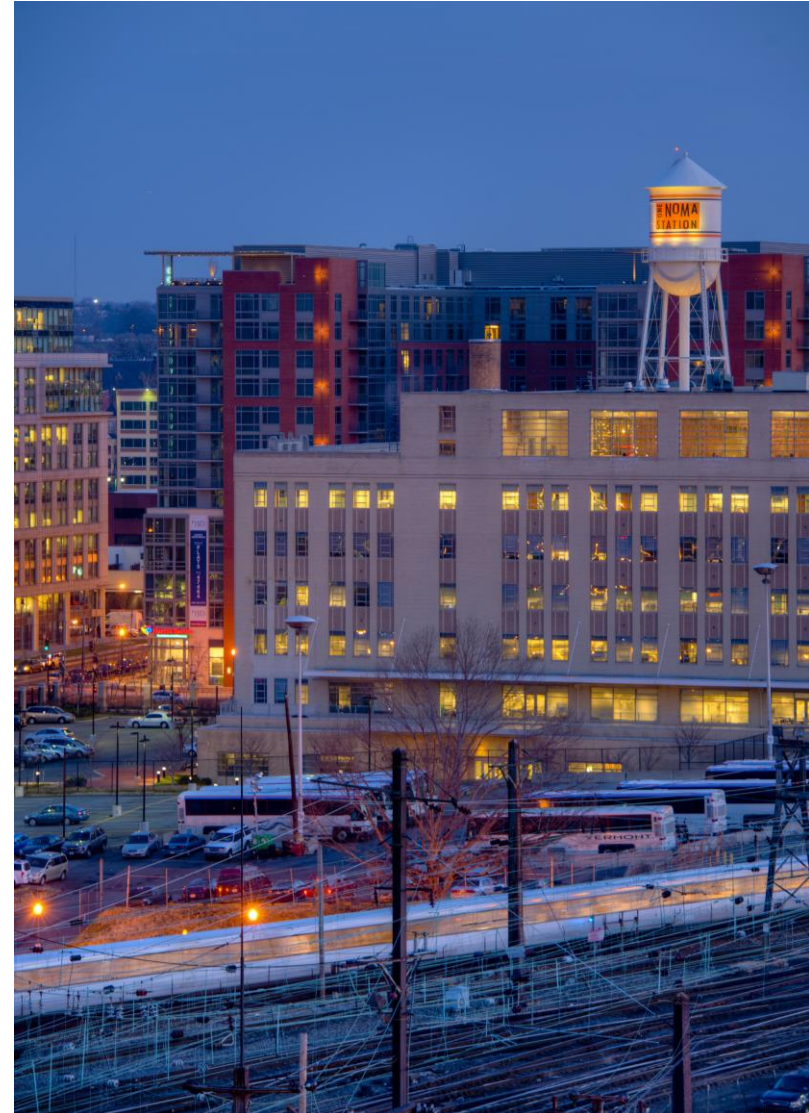
## At a glance

### NoMa Today

- 36,000 people within market area (18,000 residents within ½ mile of 1<sup>st</sup> and M St NE)
- 44,000 employees
- 90,000 daily average pedestrian count

### And growing:

- Almost 1,000 apartment units under construction
- 2,466 apartment units planned over the next 3 years
- Most dense mixed-use neighborhood in DC at build out





# NoMa Neighborhood

## At a glance

What does NoMa lack?

Parks!

- No publicly accessible park space
- On average, the District has 12.9 acres of open space for every 1,000 residents
- NoMa has less than 5 acres of open space

Parks are critical for the future of a great, growing neighborhood







# Planning for Parks

Over many years:

- 2006 NoMa Vision Plan & Development Strategy
- 2011 American Planning Association Workshop
- 2012 Public Realm Design Plan

And with many stakeholders:

- NoMa residents and employees
- Local ANCs and community associations
- Development community
- DC Government agencies

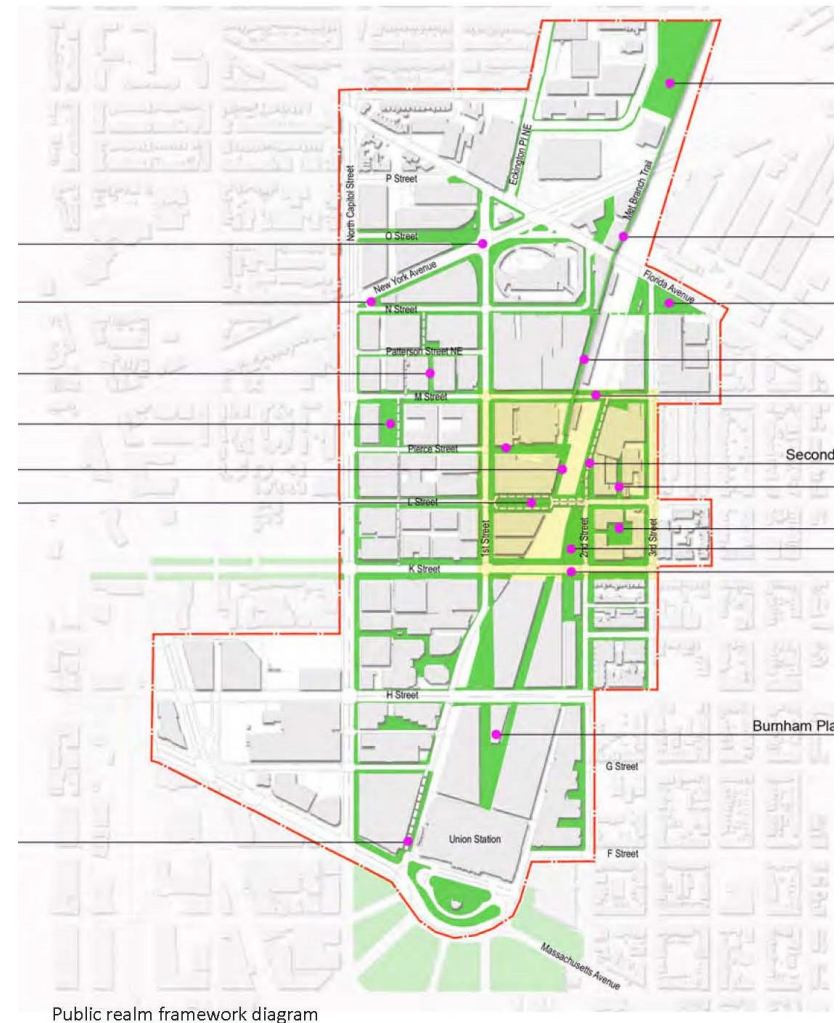




# Planning for Parks

## Common themes emerged:

- Limited public land in NoMa for open space
- Connectivity to and through neighborhood is key
- Streets and sidewalks are opportunities
- A central “commons” is needed for gathering
- Recreation-centered open space and playgrounds are essential



Public realm framework diagram





# NoMa Parks Foundation

## Establishment

What is the NoMa Parks Foundation?

- Formed in December 2012
- Mission: establish welcoming, sustainable, beautiful spaces where people can play, refresh, and connect, now and in the future
- Established to bring resources from private and public sectors together to bear on the parks problem





# NoMa Parks Foundation

A Public-Private Partnership

## How do we partner?

- \$50 million grant from DC Government  
NoMa Parks Grant Authorization Act of 2013;  
allows for grants to the NoMa Parks Foundation  
“for the purpose of acquiring land and building  
parks and public spaces...in accordance with the  
NoMa Public Realm Design Plan”
- Grant signed October 2014 and concludes  
September 2020
- Private sector has already committed \$15 M  
value in foregone development







# NoMa Parks Foundation

## Public Engagement



## ONGOING PUBLIC ENGAGEMENT

The NoMa Parks Foundation is committed to carrying out the vision expressed in the NoMa Public Realm Design Plan. That Plan, however, is conceptual and there will continually be a need for community engagement in order to refine and implement each of the NoMa park projects. To that end, the NoMa Parks Foundation is committed to the following plan for on-going community engagement.

### PROJECT-SPECIFIC COMMUNITY ENGAGEMENT:

Each of the design contracts for NoMa parks includes community meetings as a design team requirement during the schematic design process. Additionally, the NoMa Parks Foundation looks forward to opportunities to regularly provide web-based information and receive online feedback.

### GENERAL:

At least three times each year, the NoMa Parks Foundation will hold a public meeting to provide general updates on NoMa Parks progress and receive community feedback.

### FEATURED POSTS

Washington Post: As D.C. embraces its industrial past, New York's High Line Park shows the way

### MORE NOMA PARKS NEWS







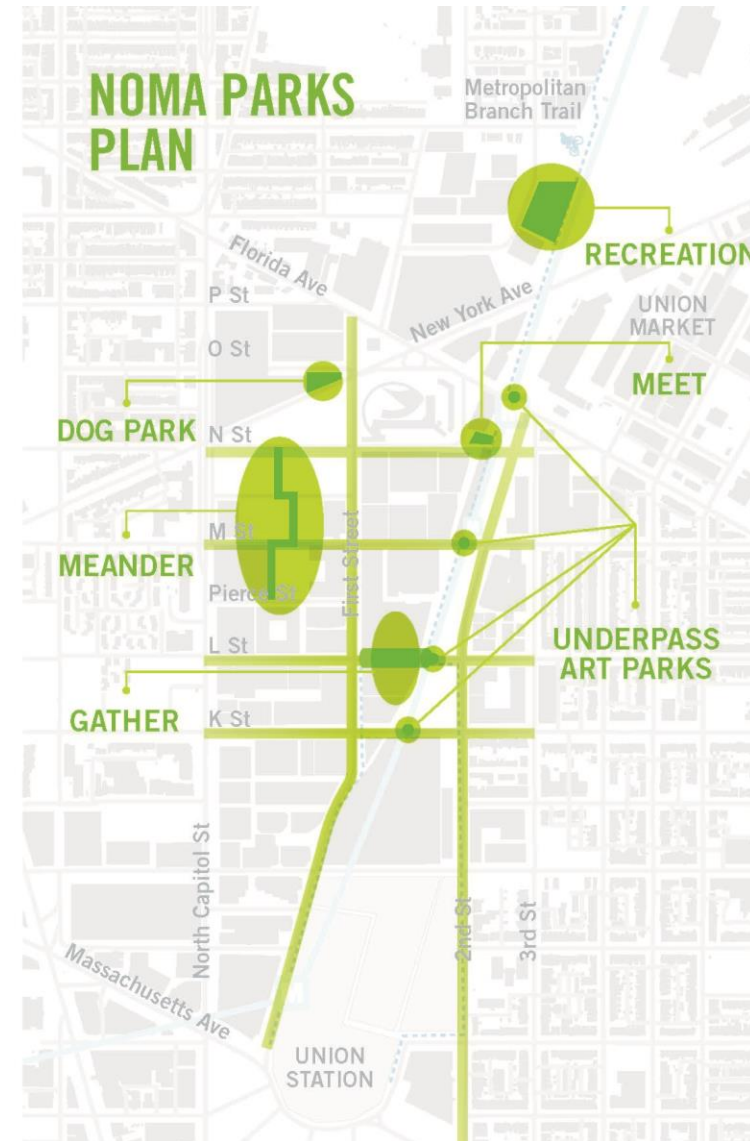
# Q&A



# NoMa Parks Foundation

## Parks Envisioned

- Public Realm Design Plan identifies specific park opportunities and to-be-determined pocket parks
- Parks Plan includes:
  - green spaces
  - playground
  - public plazas and gathering spaces
  - pocket parks, and
  - underpass/connectivity improvements
- Goals include incorporating the best thinking on:
  - Urban park design
  - Public safety
  - Sustainability
  - Accessibility
  - Ease of maintenance





# NoMa Parks Foundation

## NoMa Green

- Neighborhood “back yard” – large, open recreation area
- Located on Harry Thomas Way NE, just west of the Metropolitan Branch Trail
- Roughly 2 acres
- Additional 1 acre to be used as a playground

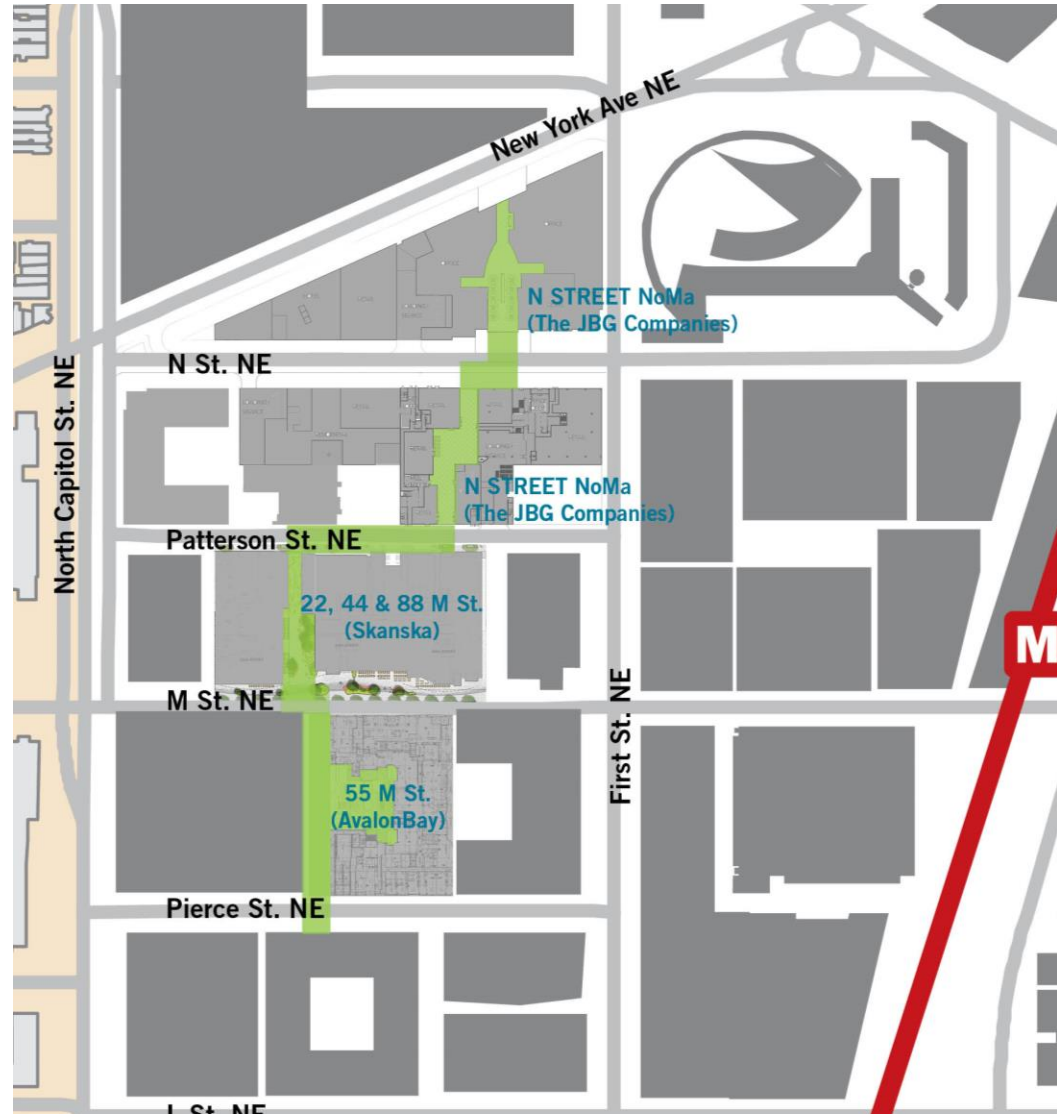




# NoMa Parks Foundation

## NoMa Meander

- Mid-block pedestrian promenade
- North-south orientation from New York Avenue to Pierce Street NE
- Seating, plantings, water features all planned along active retail corridor



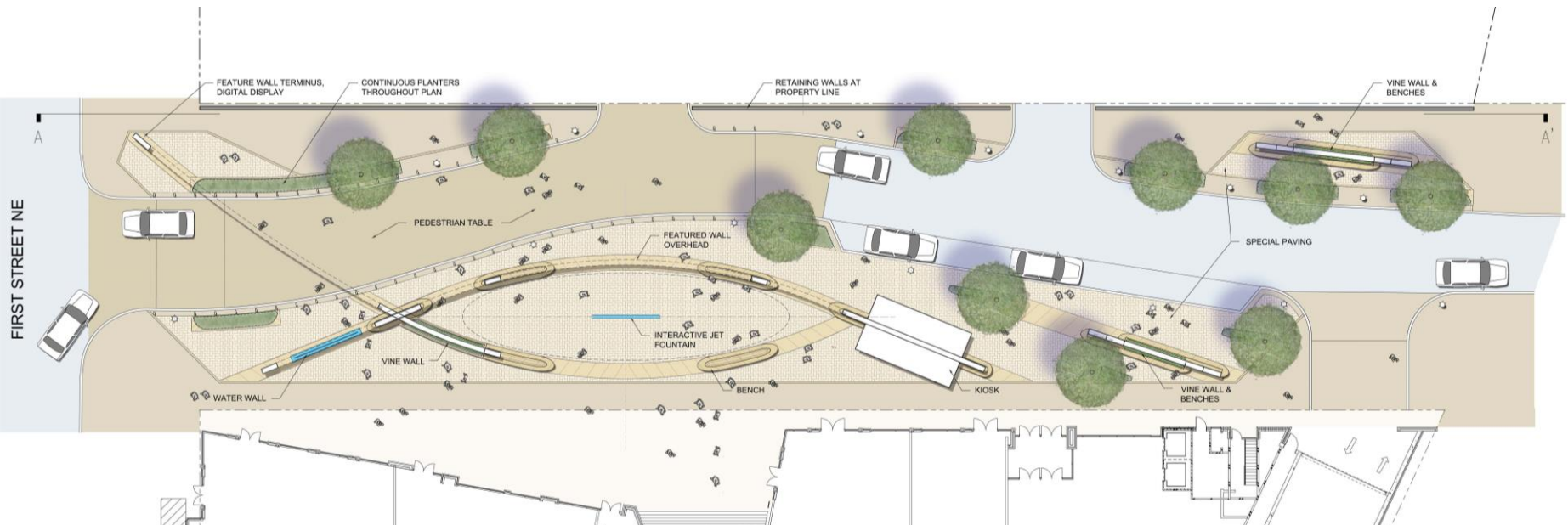




# NoMa Parks Foundation

## L Street Plaza

- Neighborhood “town square”
- First and L Street NE; adjacent to Storey Park development site
- Modification of existing street and traffic calming will accommodate great public space for gatherings and events

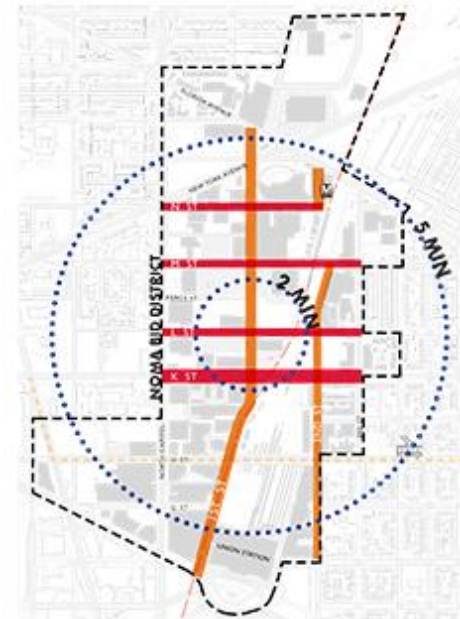




# NoMa Parks Foundation

## Linear Parks and Pocket Parks

- Linear parks, pocket parks, and underpasses are the “connective tissue” in the neighborhood
- Takes advantage of public space to extend park elements through neighborhood, improving comfort, safety, and aesthetics
- 4 underpasses and 8 streets already identified; pocket park opportunities will be identified in the future





# NoMa Parks Foundation

## L Street Underpass

- “Lightweave” has been selected for L Street Underpass
- Designer is Future Cities Lab
- Contractor is M.C. Dean
- Light will move in slow waves based on ambient sounds – creating a meditative and interactive experience



Join NoMa Parks Foundation to learn more and meet the design team!

Monday, July 13<sup>th</sup>

6:30pm

1200 First Street NE





# NoMa Parks Foundation

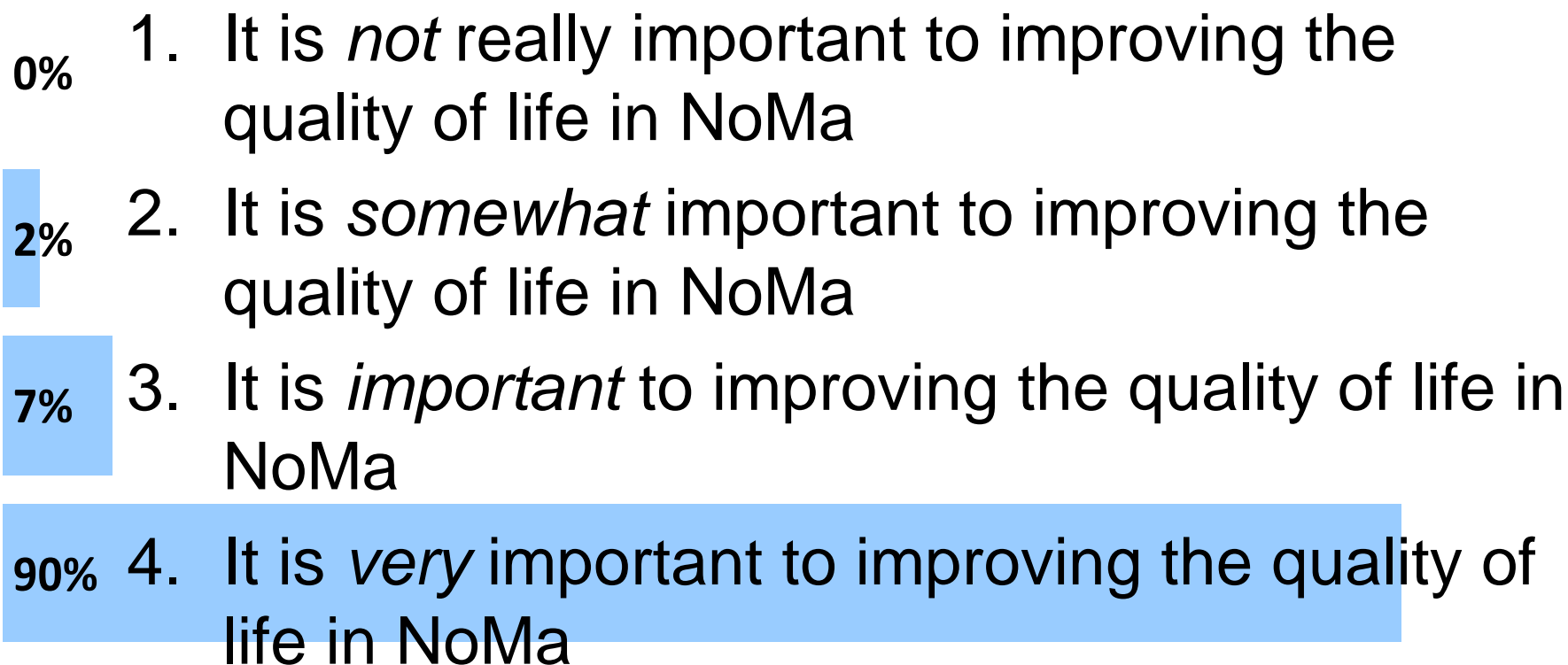
## Priorities and Timeline

Underpasses:	2015-16
NoMa Green:	summer 2015 announcement
L Street Plaza:	design 2015
NoMa Meander:	design ongoing
Corridors and Pocket Parks:	design late 2015/ early 2016





# How important do you think it is have parks in NoMa to help create higher quality of life in the neighborhood?





# NoMa Parks Foundation

## Next Steps

- L Street Underpass Meeting  
Monday, July 13<sup>th</sup>  
6:30 PM  
1200 First Street NE
- M Street Underpass Meeting and Prototype Installation  
Date TBD this summer
- Next NoMa Parks Community Conversation  
October 2015

Want to learn more?

[nomaparks.org](http://nomaparks.org)

Stacie West – Director of Parks Projects

[swest@nomaparks.org](mailto:swest@nomaparks.org) 202-810-0091



NoMa Parks  
Foundation



**Thank You !!**

