

3rd and L STREET NE



ABOUT THE SITE

- 5,295 square foot lot
- With adjacent public space, approximately 8,200 square feet available for a park
- Parcel is titled to the District of Columbia
- Site was previously planned to be a 6-story, 41-unit condo building

NEXT STEPS

- Finalize site acquisitions for parks system
- Engage additional designers as required
- Site/project-specific community meeting to begin developing program
- Develop program that creates a park that complements the system of parks in NoMa and nearby neighborhoods

POSSIBLE PARK ACTIVITIES

Passive park

Dog park

Playground

Community garden

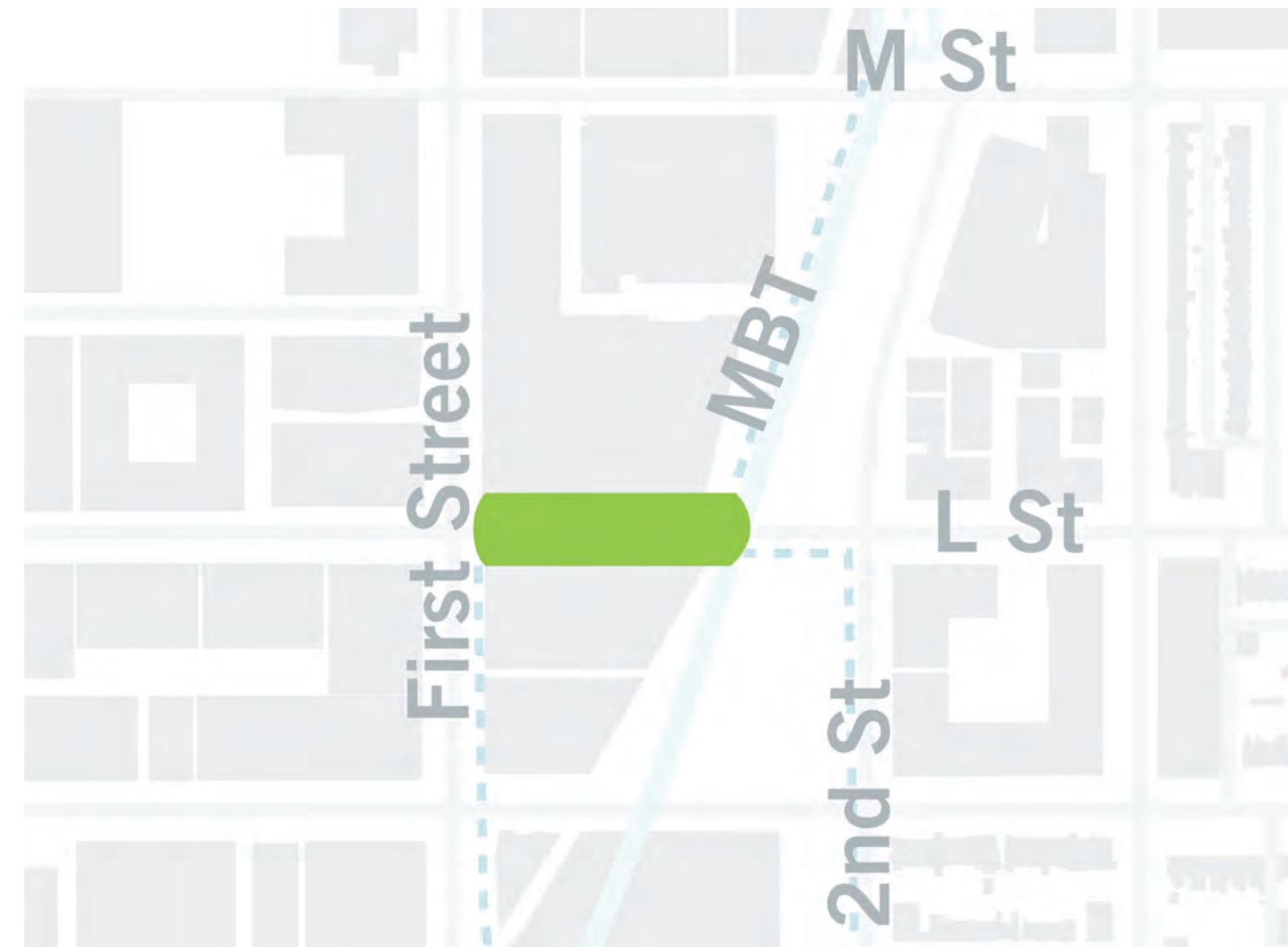
Outdoor/table games

Picnic area

Adult outdoor fitness equipment

Other ideas?

L STREET PLAZA



ABOUT THE SITE

Considerations:

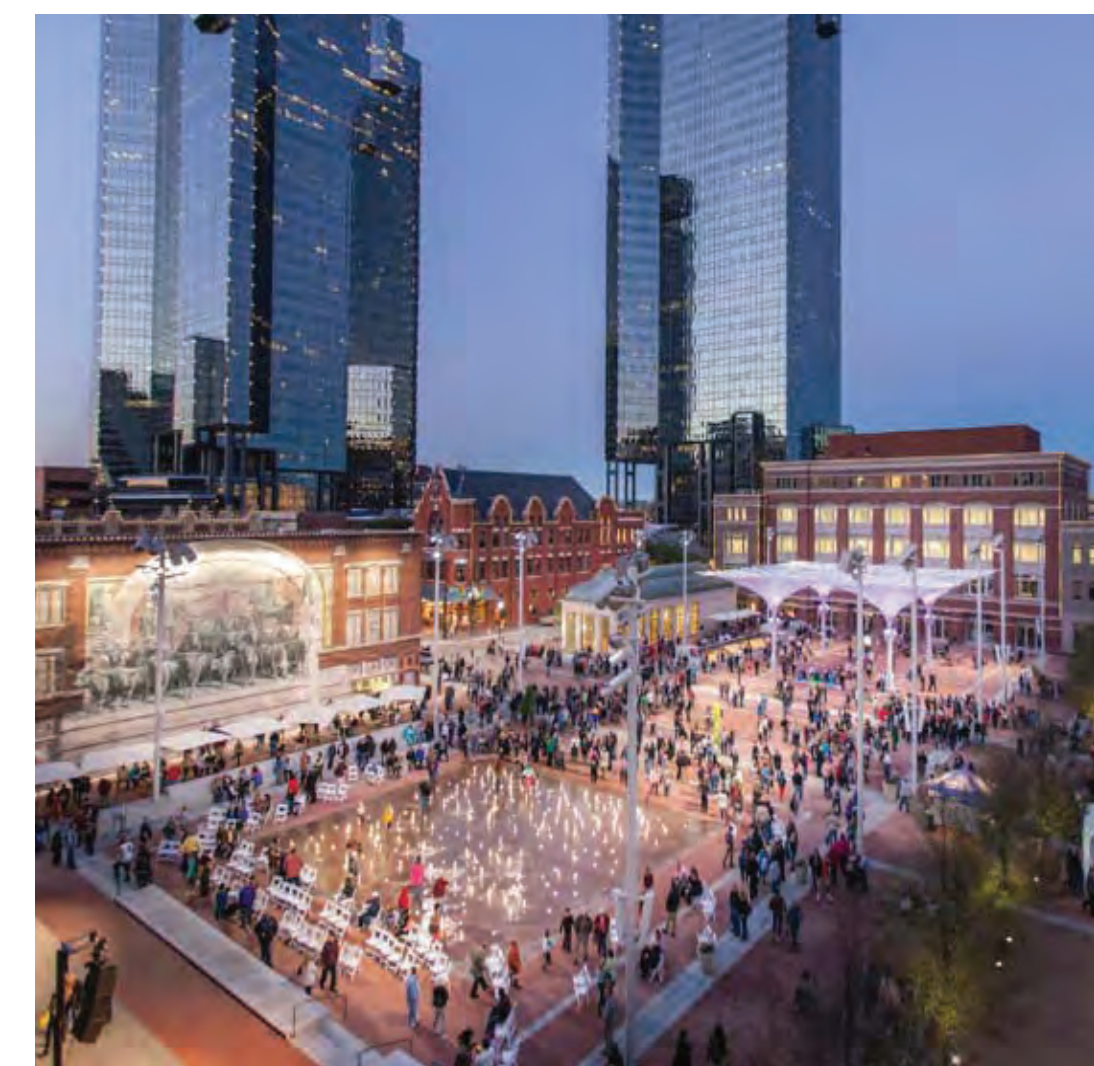
- Scale: 90'-110' wide; 400' long
- Vehicular traffic: low volumes/low speed
- Undetermined development to the north
- Optimize sun exposure given building heights
- Utility locations

Goals for a Community Commons:

- Distinctive
- Coherent
- Comfortable
- Flexible
- Active

Opportunities:

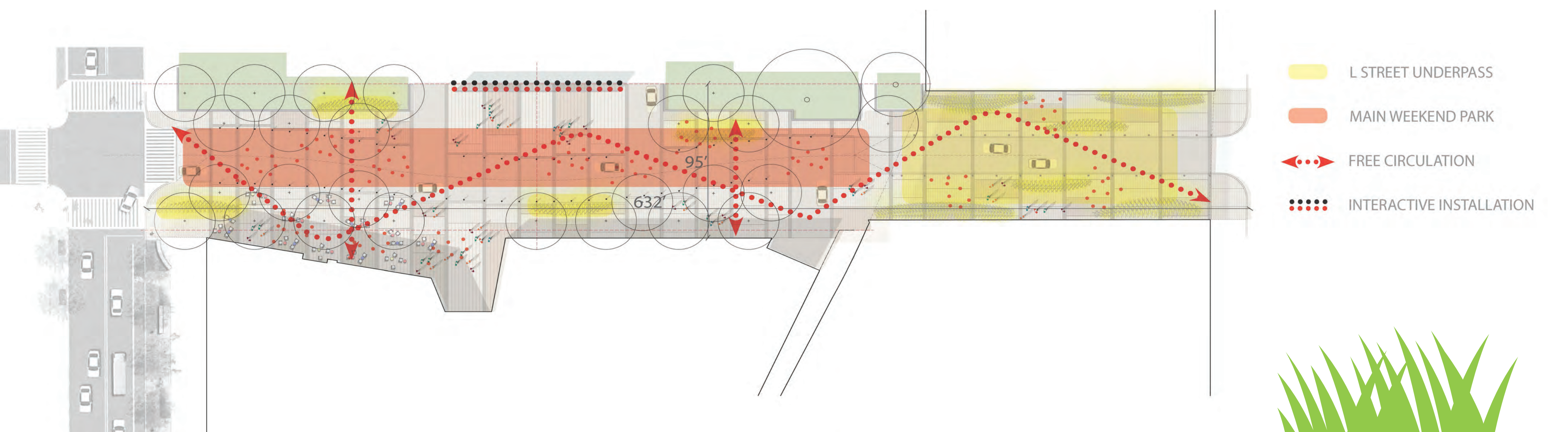
- Serve as a community gathering space
- Connect to the Underpass Art Park
- Engage First Street
- Provide a healthy tree canopy



Denver's 16th Street Pedestrian Mall and Fort Worth's Sundance Plaza



Silva cells and structural soils can help ensure a healthy tree canopy while allowing for a variety of plaza uses.



- L STREET UNDERPASS
- MAIN WEEKEND PARK
- ➔ FREE CIRCULATION
- INTERACTIVE INSTALLATION



NOMA GREEN

ABOUT THE SITE + PARK PROGRAM COMMUNITY INPUT FINDINGS TO DATE



ABOUT THE SITE

- North of New York Avenue, bounded by Harry Thomas Way, NE, to the west and the Metropolitan Branch Trail to the east
- Roughly 2 acres

PARK PROGRAM COMMUNITY INPUT FINDINGS TO DATE

- Neighborhood “backyard”
- Informal, active recreation
- Open green space
- Large, contiguous open space
- Outdoor recreation area
- Strong MBT connection
- Amphitheater
- Grilling facilities
- Tending a garden
- Walking through a meadow



Community Gardens



Bosque Seating Area + Grills



Multi-Purpose Lawn/Open Space



Multi-Purpose Lawn/Open Space



Multi-Purpose Lawn/Open Space



NOMAPARKS.ORG

[@NOMAPARKSDC](https://twitter.com/NOMAPARKSDC)



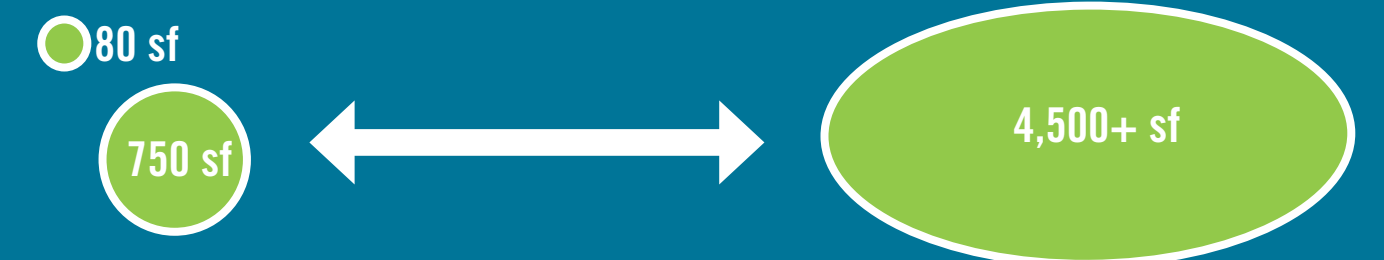
Concession Building

NOMA GREEN

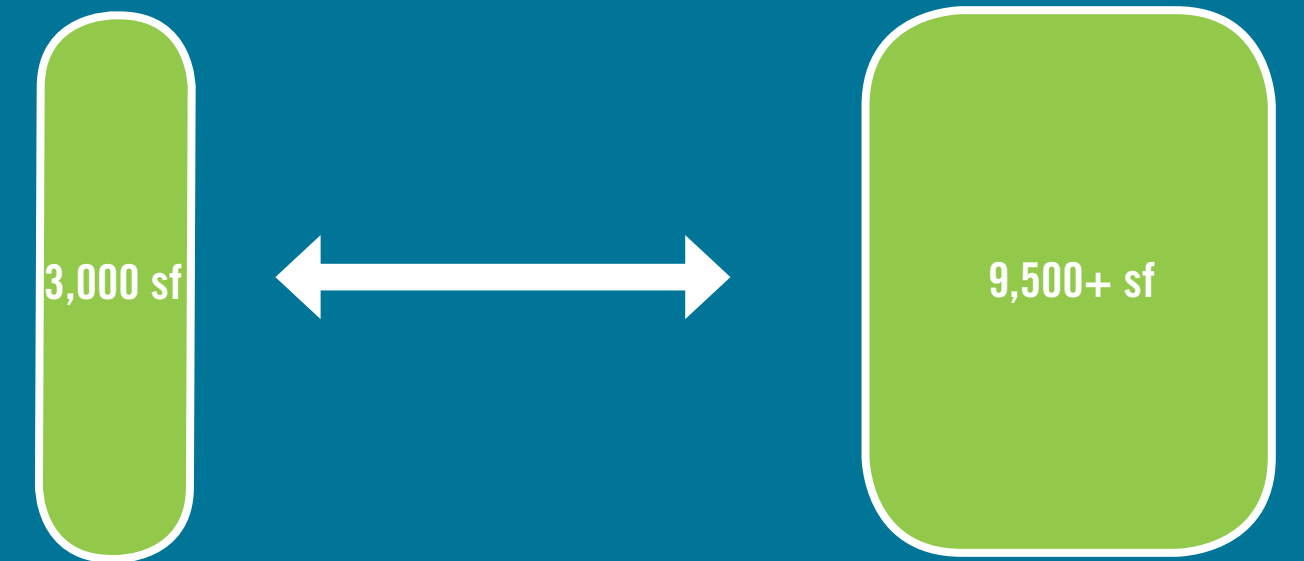
PROGRAM IDEAS



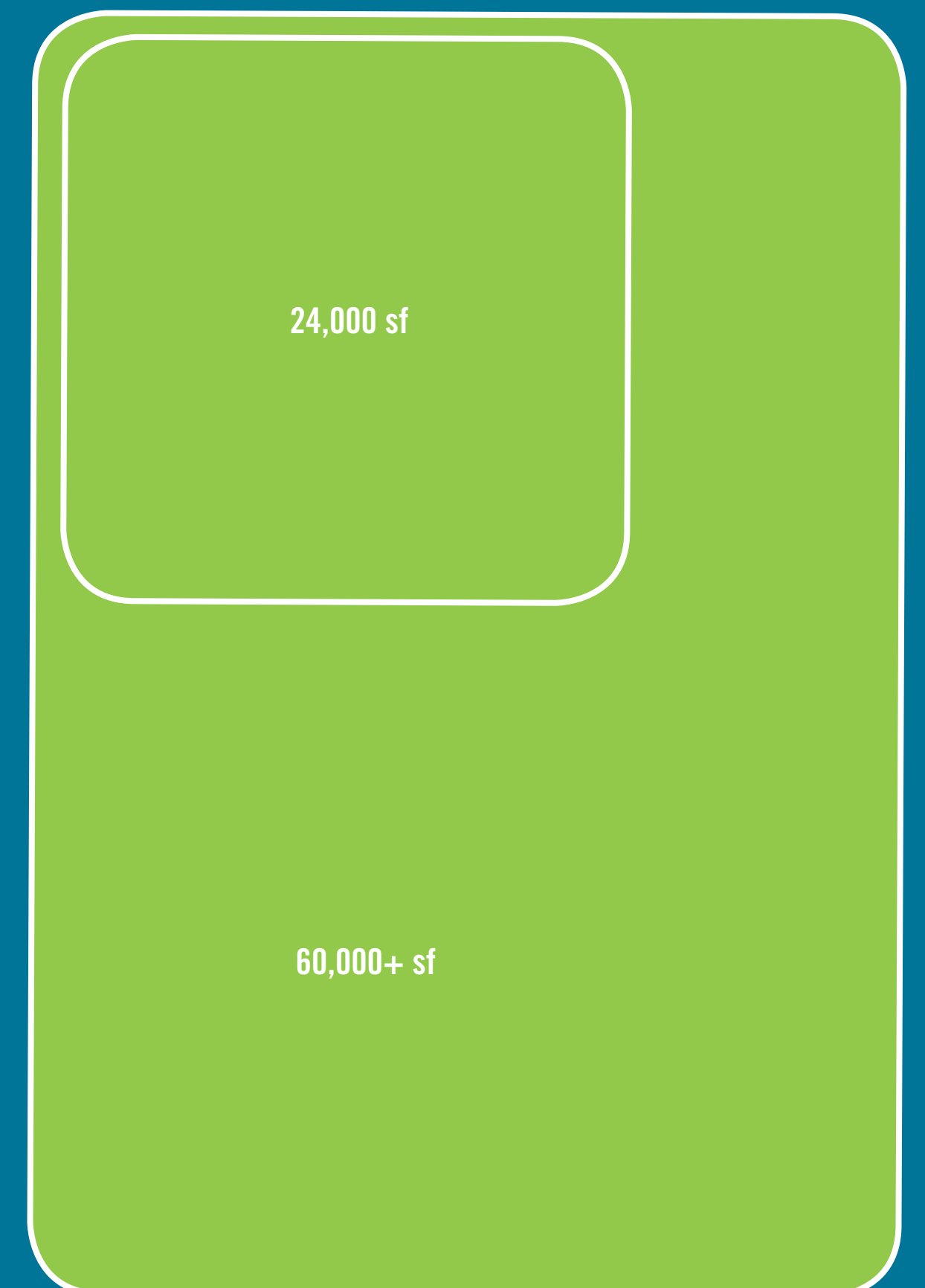
ACTIVITY SPATIAL RANGES*



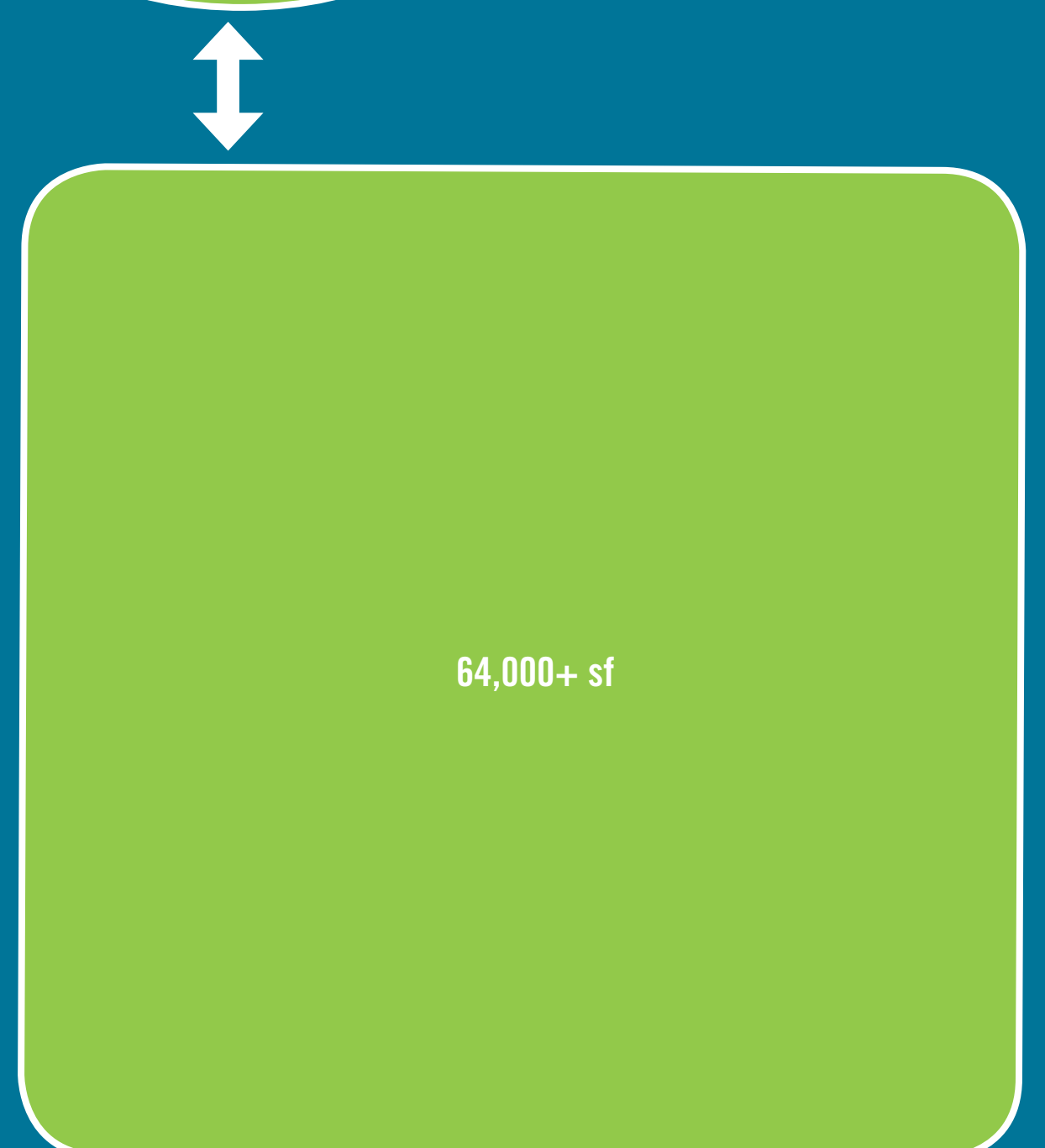
Sit Outside | Picnic | Concession



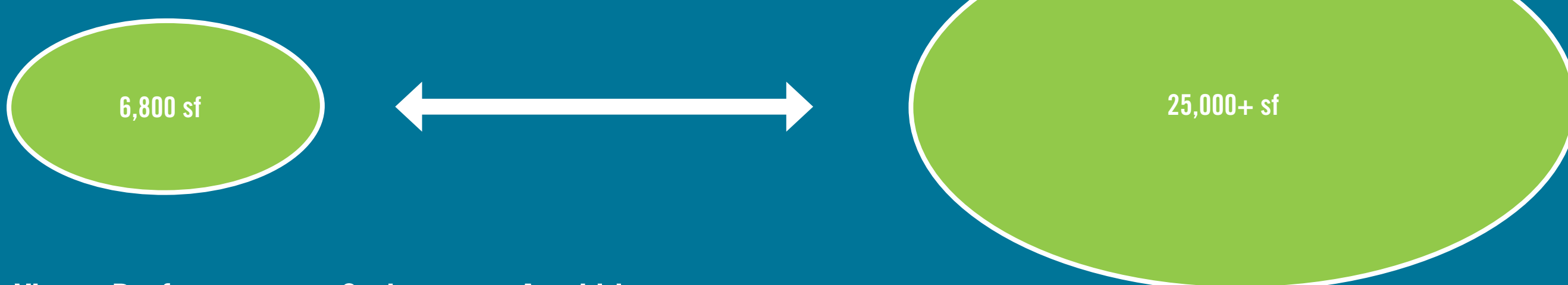
Tend a Community Garden



Play a Game of Catch | Play Pick-Up Field Sports



Attend a Special Event



View a Performance or Gather at an Amphitheater

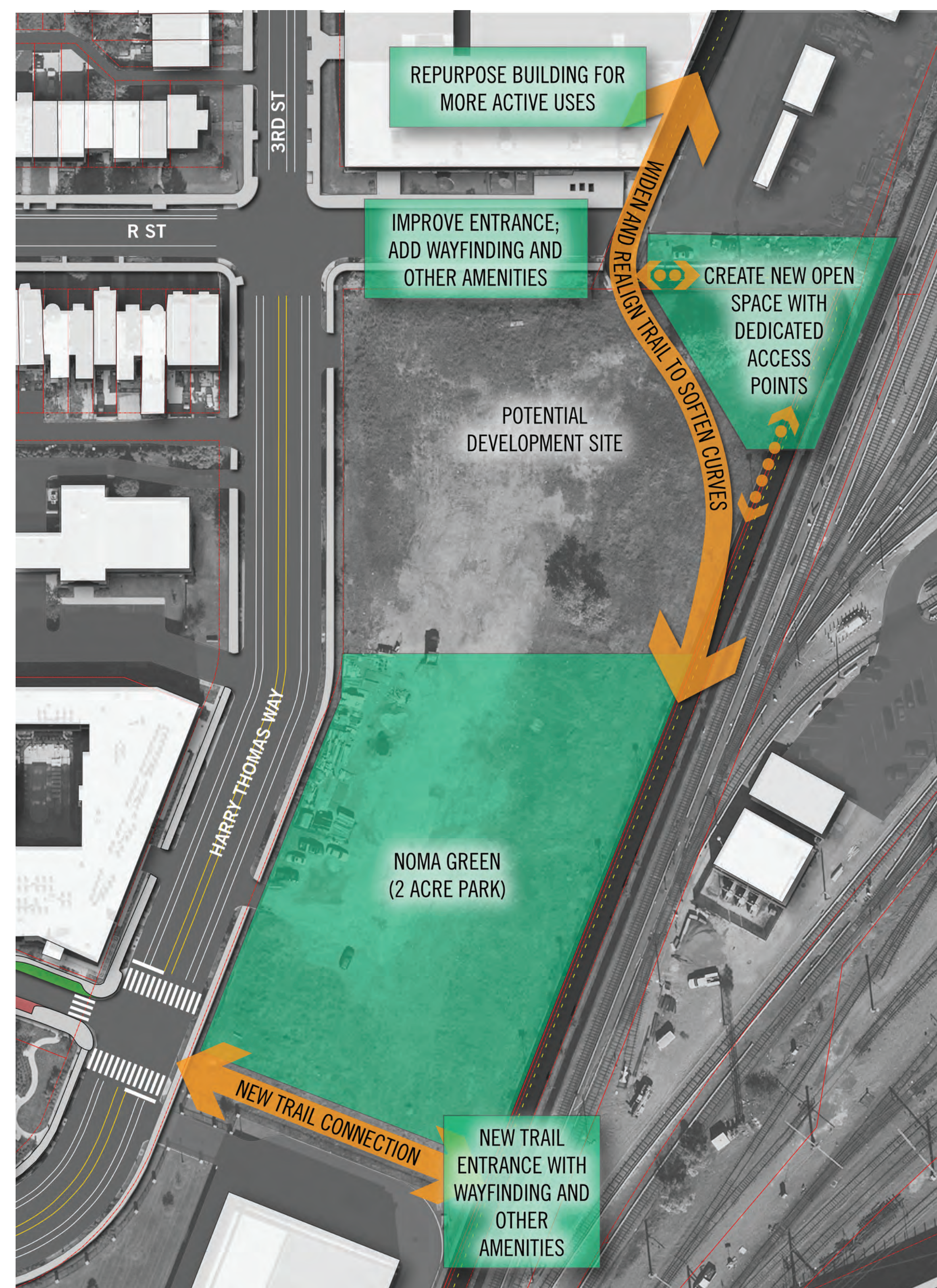
* Note: Activity spatial ranges illustrated are industry suggestions. The exact activities, square footage, and spatial organization of activities in the site will vary upon a number of factors including, but not limited to the desirability/demand for the activities, site topography, and the desire to screen the site from adjacent uses, such as the train tracks.



NOMAPARKS.ORG

[@NOMAPARKSDC](https://twitter.com/NOMAPARKSDC)

MET BRANCH TRAIL



RECOMMENDED ACTIONS

SAFETY

- Install/replace overhead lighting
- Install mile marker signage
- Install emergency call boxes with security cameras
- Install trail user counters and displays

IDENTITY

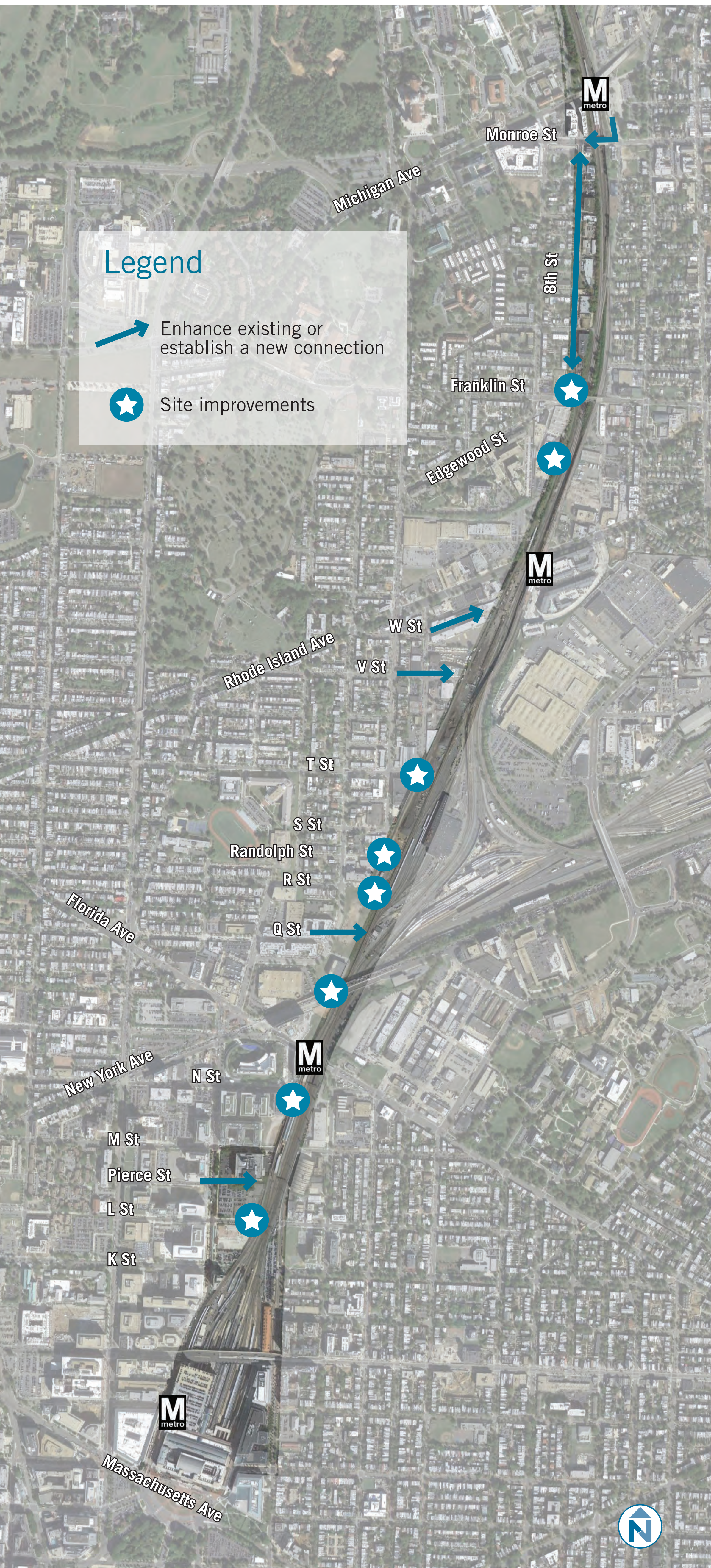
- Install wayfinding signage
- Activate empty spaces along trail
- Install public art and artistic lighting
- Establish more trail programming

ACCESS

- Complete the trail
- Enhance existing L Street NE access
- Establish a Pierce Street NE connection to the trail
- Establish a connection to Union Market
- Establish a Q Street NE connection
- Realign the trail at R Street NE
- Activate the buildings and spaces along R Street NE and Randolph Place
- Establish T Street NE as a primary neighborhood connection
- Improve the access at V & W Street NE
- Establish a connection up to Edgewood Court and create a shared street
- Establish the Franklin Street alley as a connection to the trail from 7th Street
- Install a bike facility on 8th Street NE
- Establish a connection to the Brookland Metro station



MET BRANCH TRAIL



SAFETY & ACCESS STUDY

- The Metropolitan Branch Trail is one of the city's premier trail amenities, providing a linear park spine through much of NoMa.
- While the trail is a unique recreational and community amenity, it suffers from minimally marked points of access, making the trail difficult to find and use.
- Perceptions of vulnerability and security issues on the trail also dissuade others from using this tremendous resource.
- In partnership with MPD, DDOT and other community stakeholders, the NoMa BID completed a Safety and Access Plan for the trail, which produced a number of actionable steps to improve the trail's image, accessibility, and safety in order to attract more users.