

NoMa Parks Foundation



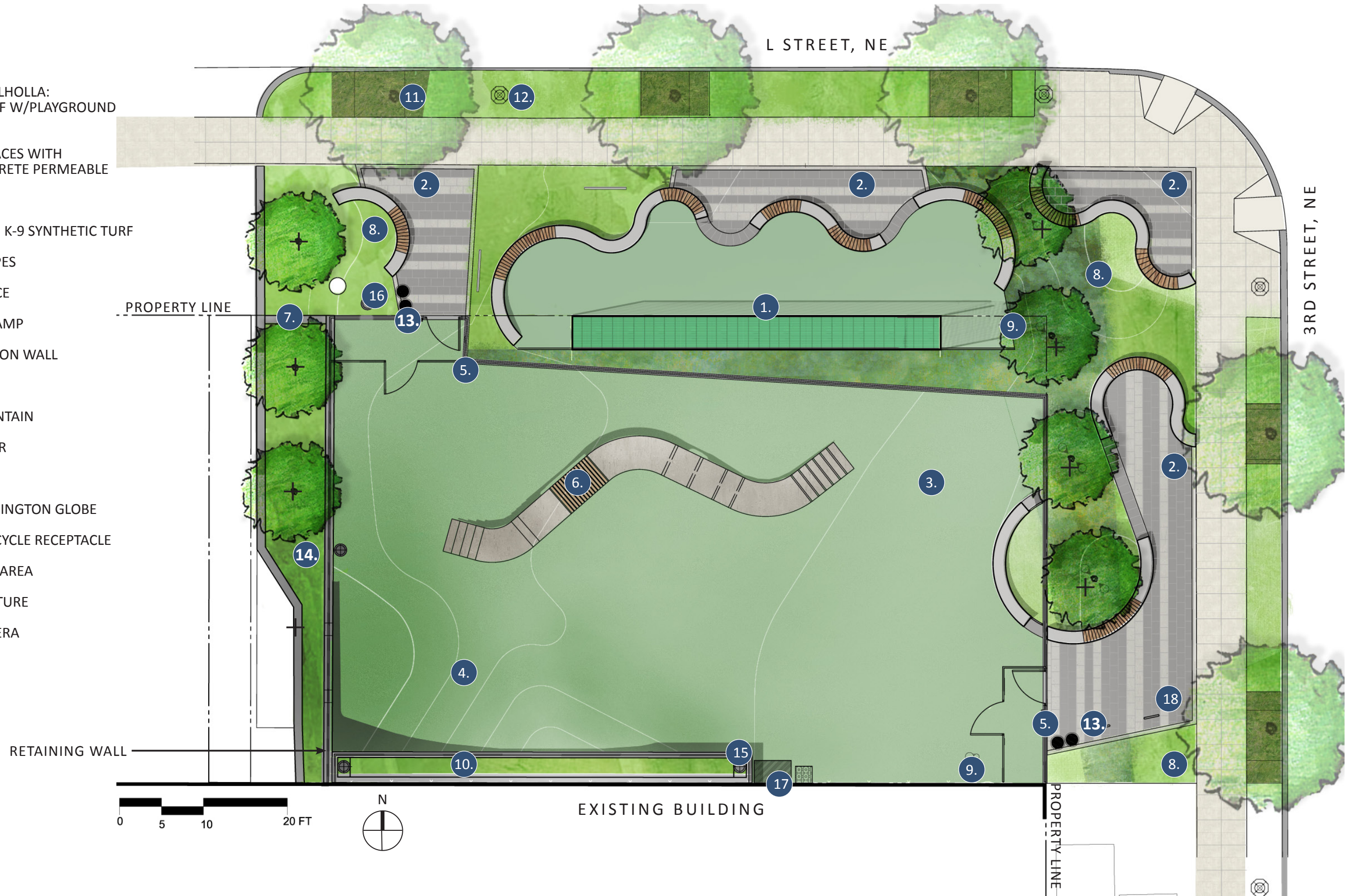
NoMa 3rd & L Park Community Meeting

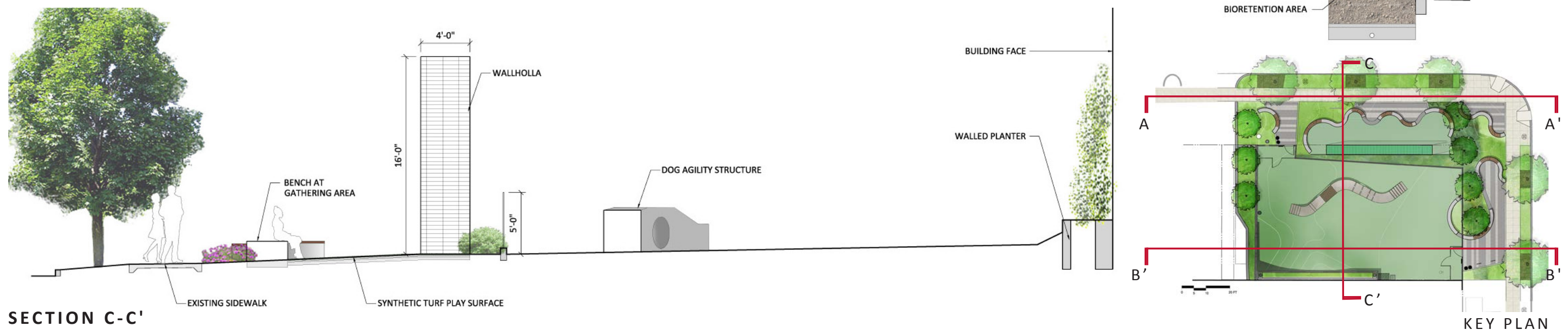
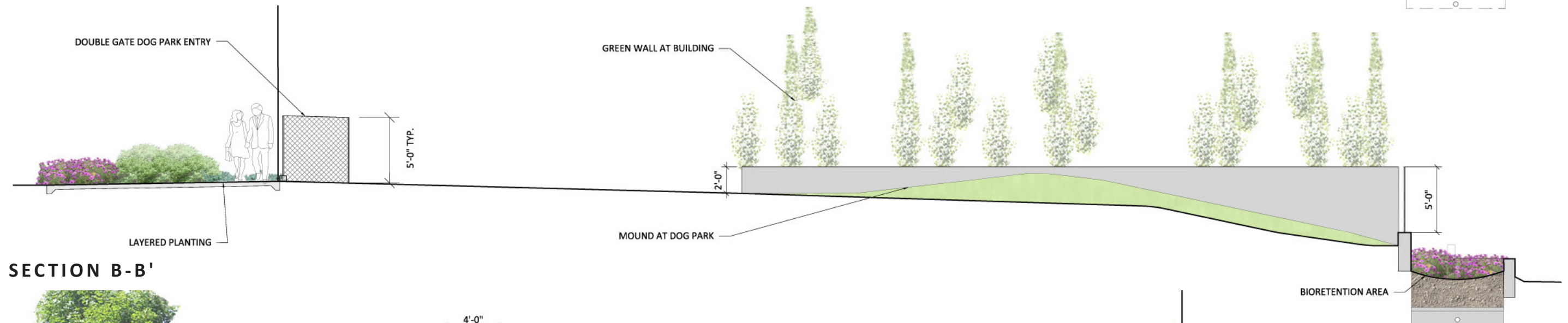
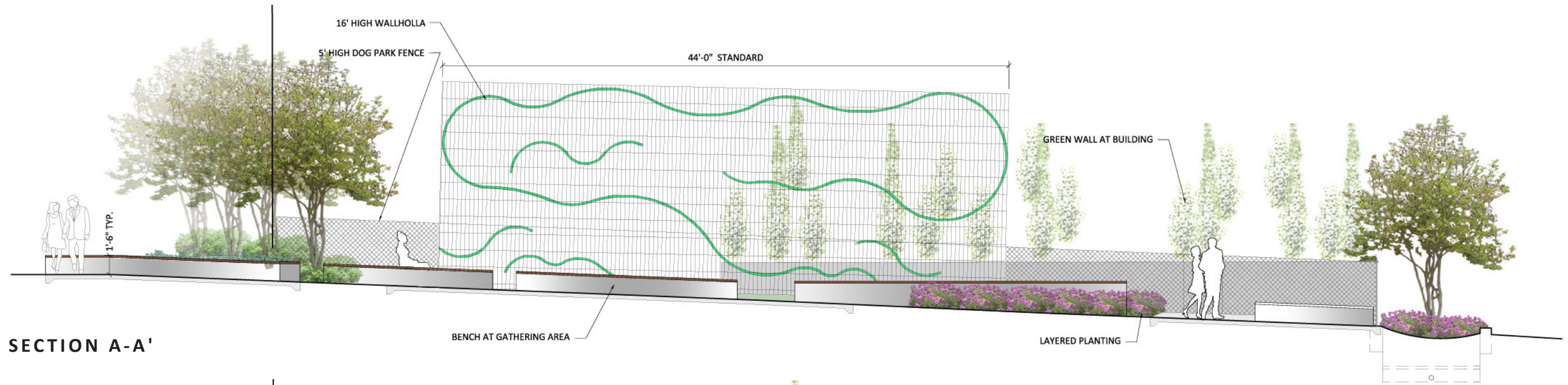




KEY

- 1. KIDS PLAY: WALLHOLLA: SYNTHETIC TURF W/PLAYGROUND FALL ZONE
- 2. GATHERING SPACES WITH SEATING: CONCRETE PERMEABLE PAVERS
- 3. DOG RUN/PLAY: K-9 SYNTHETIC TURF
- 4. DOG PLAY: SLOPES
- 5. DOG PARK FENCE
- 6. DOG AGILITY RAMP
- 7. LID BIORETENTION WALL
- 8. PLANTING
- 9. DRINKING FOUNTAIN
- 10. RAISED PLANTER
- 11. EXISTING TREE
- 12. EXISTING WASHINGTON GLOBE
- 13. TRASH AND RECYCLE RECEPTACLE
- 14. BIORETENTION AREA
- 15. NEW LIGHT FIXTURE
- 16. SECURITY CAMERA
- 17. STORAGE BIN
- 18. BIKE RACKS



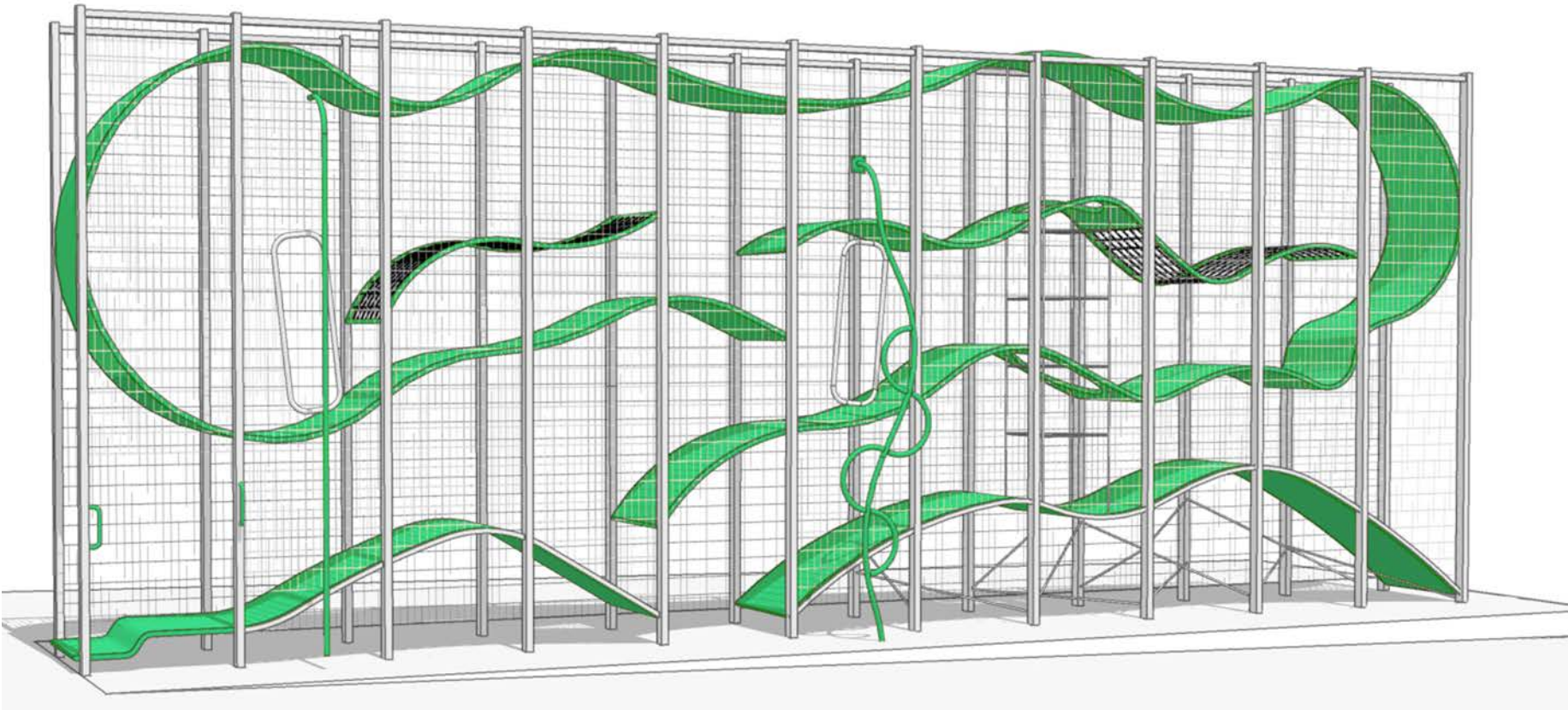






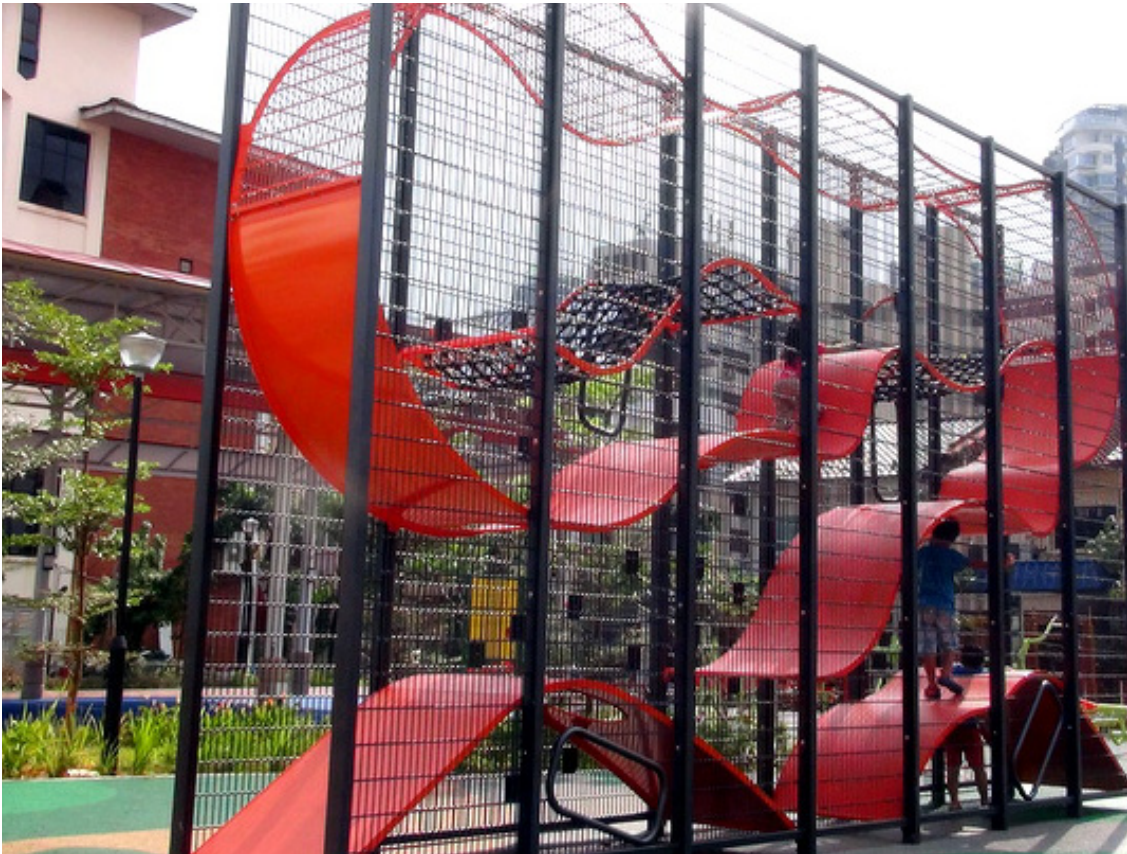


NOMA WALLHOLLA - DESIGNED BY GORIC PLAYGROUNDS



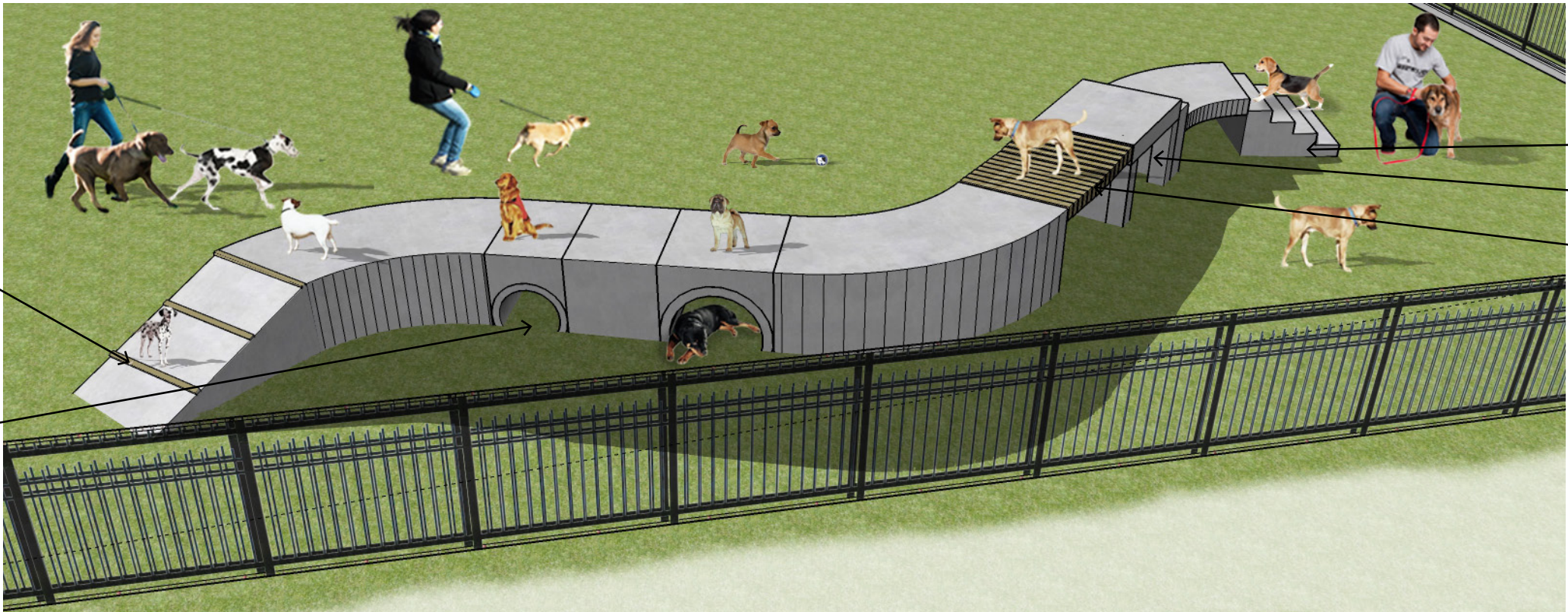
DOG AGILITY STRUCTURE

WALLHOLLA PRECEDENT



CONCRETE RAMP WITH
COMPOSITE WOOD TREADS

CONCRETE TUNNEL



CONCRETE STAIRS

ZONE WITH DOG PORTHOLES

COMPOSITE WOOD BRIDGE -
NO SLAT SPACING

KEY



VIDEO CAMERA

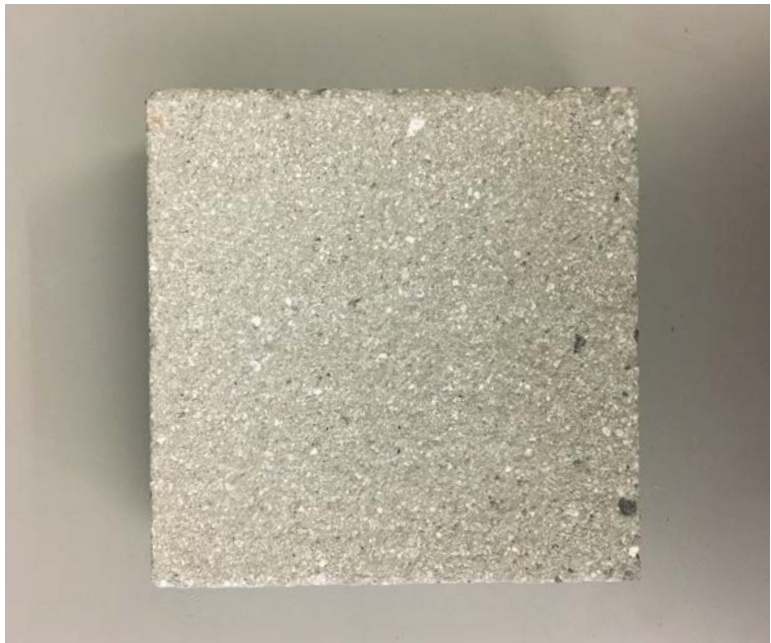


LIGHT POLES





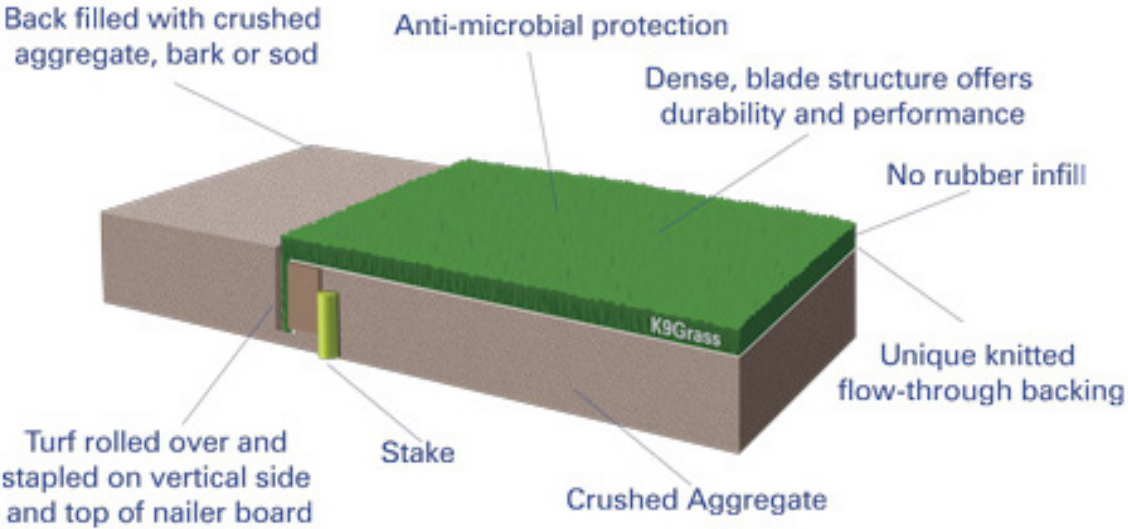
HANOVER CONCRETE PAVER (M3325, HEAVY TUDOR FINISH)



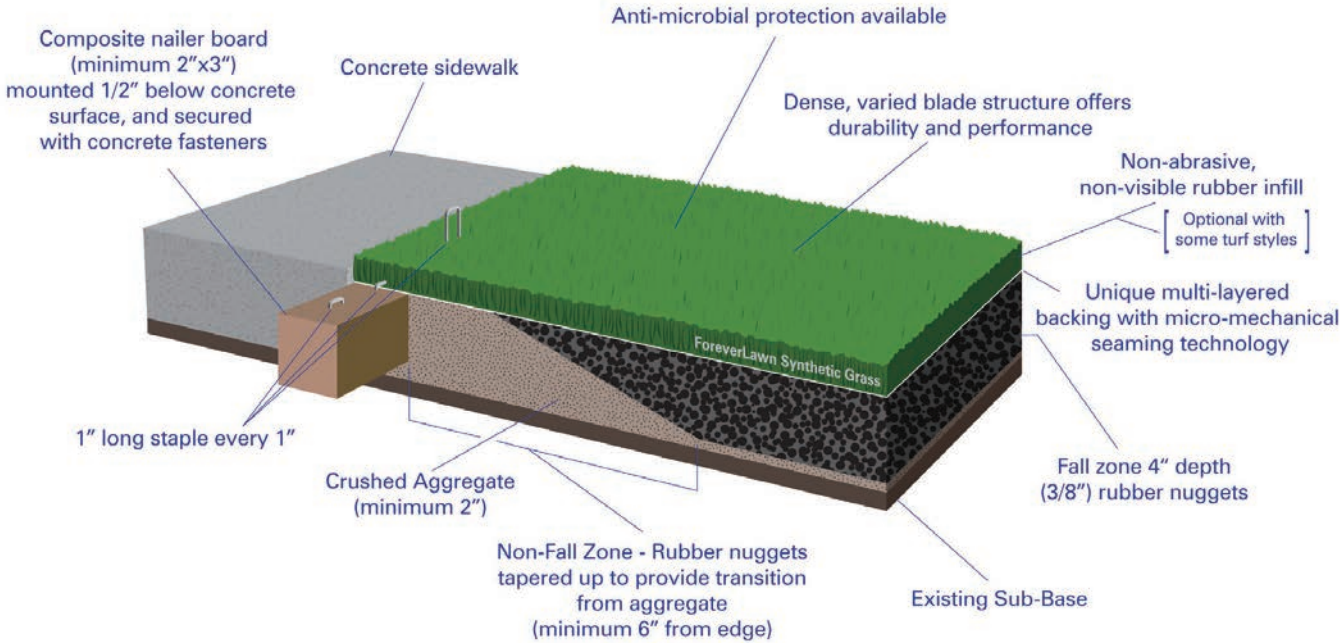
NITTERHOUSE STONE PAVER (PG7, ANTIQUE FINISH)



CONCRETE BENCH WITH WOOD SLAT SEAT TOP



K9 SYNTHETIC TURF



PLAY ZONE SYNTHETIC TURF



HOSE BIB



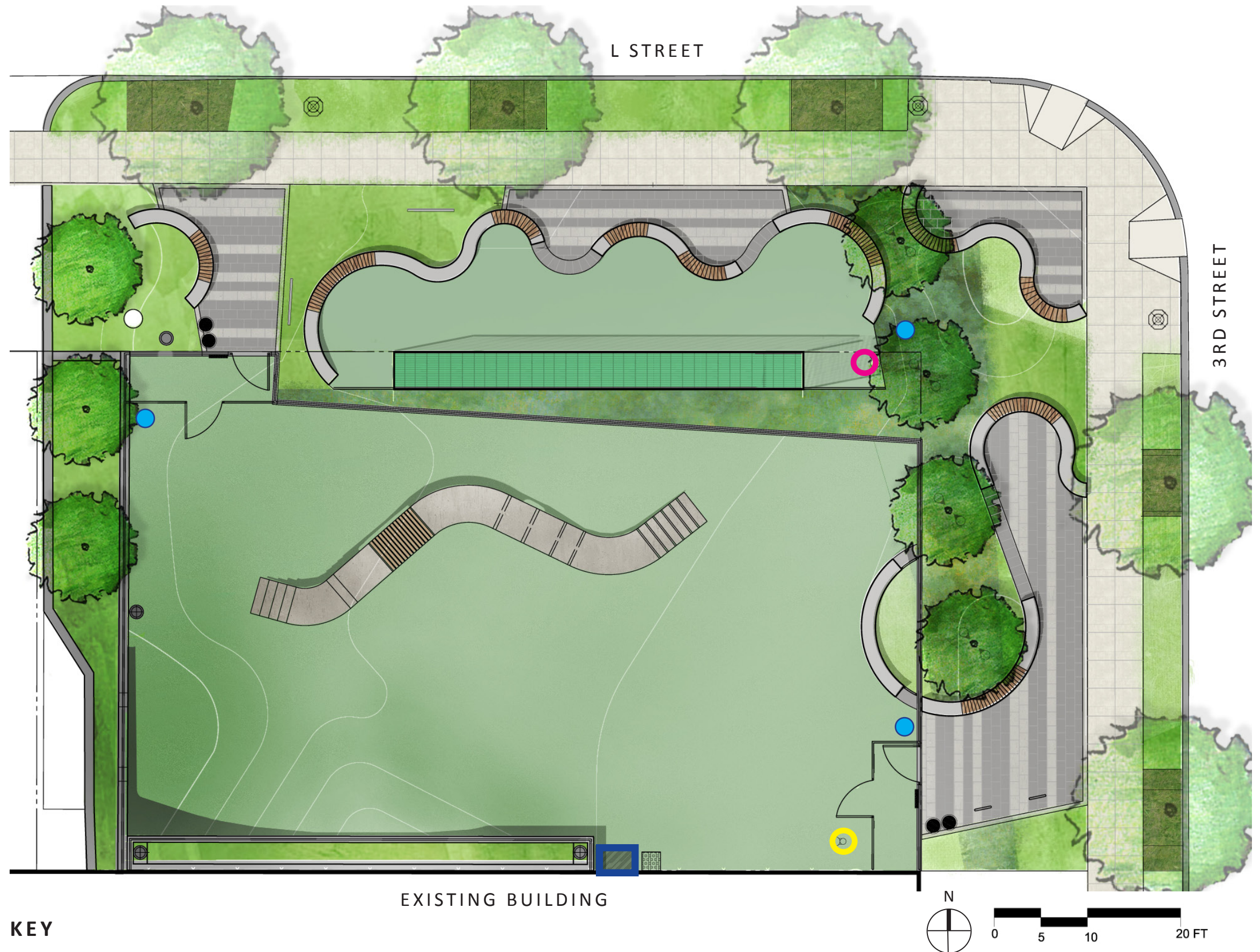
KID/ADULT DRINKING FOUNTAIN



DOG/PEOPLE DRINKING FOUNTAIN




DOG PARK STORAGE CONTAINER



KEY

 DOG/PEOPLE DRINKING FOUNTAIN

 ADULT/KID DRINKING FOUNTAIN

 HOSEBIB

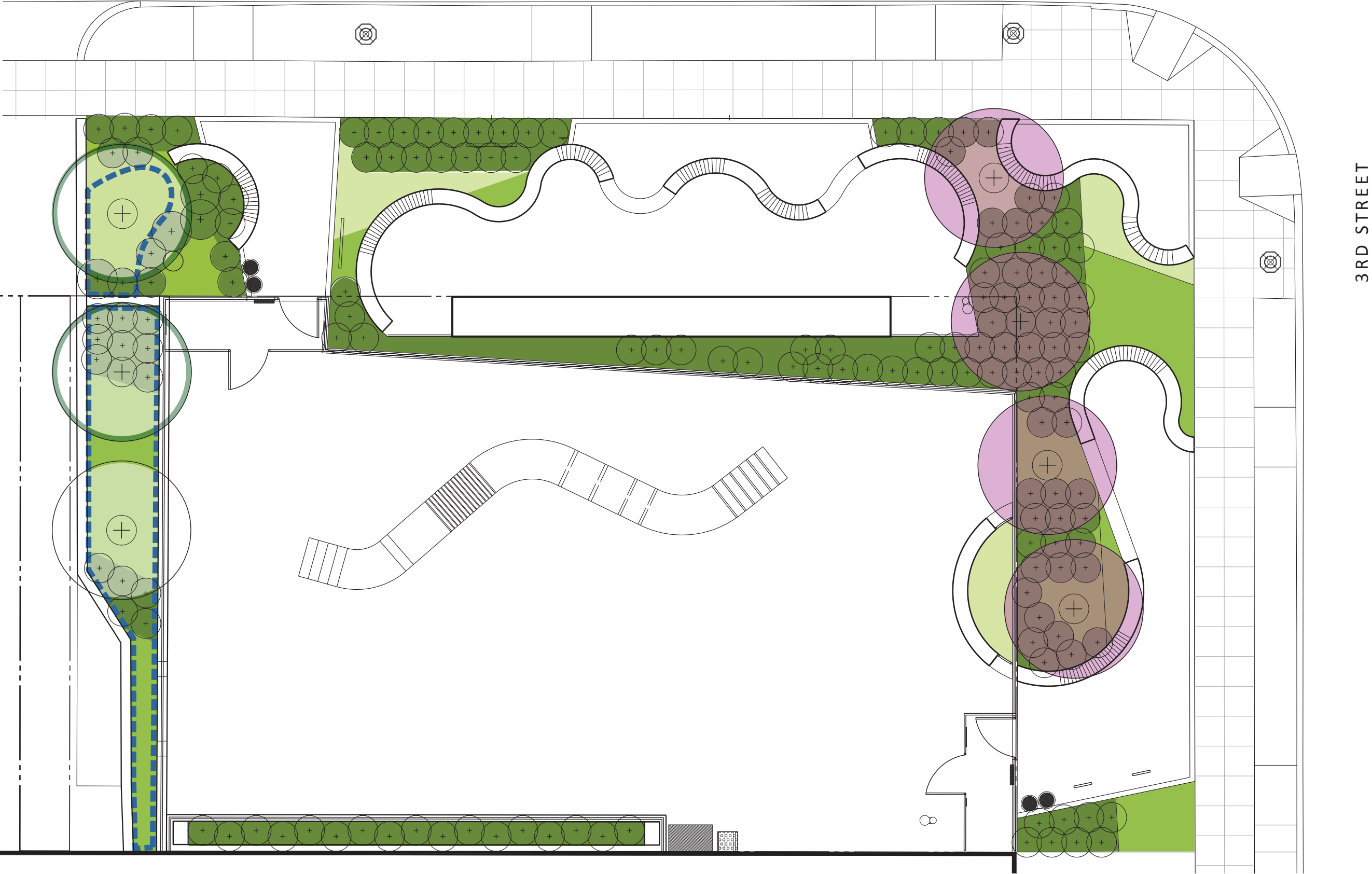
 DOG PARK STORAGE CONTAINER



LAGERSTROEMIA 'NATCHEZ'



AMELANCHIER CANADENSIS



KEY



LAGERSTROEMIA
'NATCHEZ'



SHRUBS



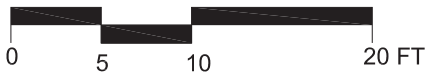
MEDIUM HEIGHT
PERENNIALS



LOW HEIGHT
PERENNIALS

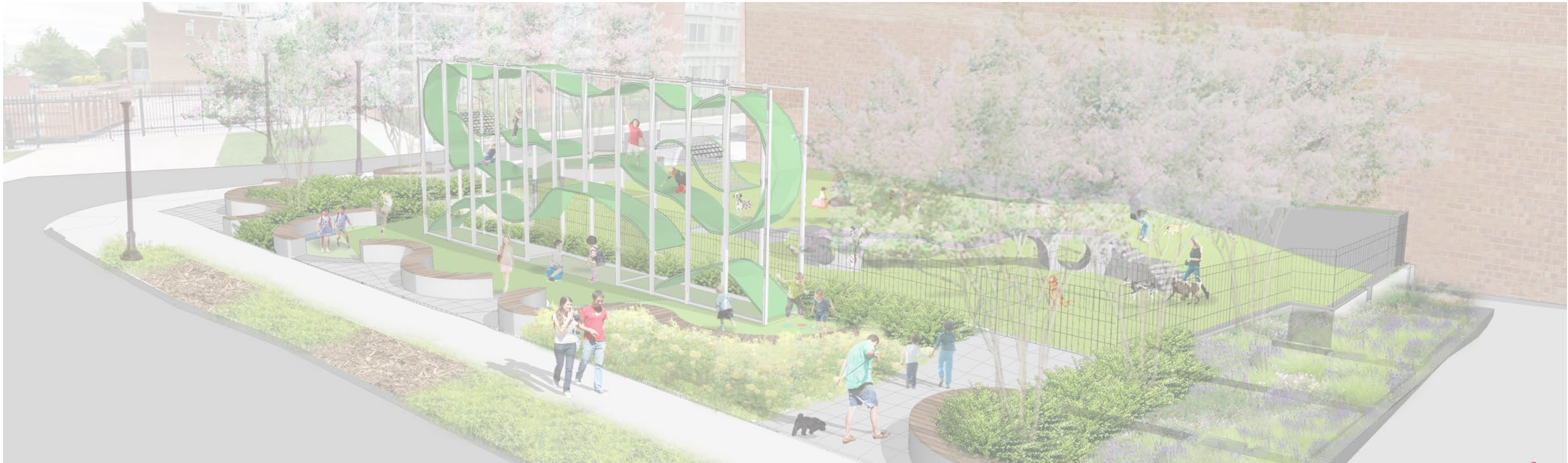


BIORETENTION
AREA



3RD AND L PARK NEXT STEPS

- 1. FILE FOR PERMITS _____ APRIL 2017
- 2. CFA FINAL DESIGN REVIEW _____ LATE SPRING/EARLY SUMMER 2017
- 3. ANC PRESENTATION FOR PUBLIC SPACE PERMIT _____ MAY 2017
- 4. BIDDING/HIRING GENERAL CONTRACTOR _____ SUMMER 2017
- 5. FINALIZE MAINTENANCE AND OPERATIONS AGREEMENT _____ AUGUST 2017
- 6. RECEIVE PERMITS FOR PUBLIC SPACE AND CONSTRUCTION _____ AUGUST 2017
- 7. CONSTRUCTION OF PARK _____ AUGUST-OCTOBER 2017
- 8. PARK OPENING _____ ESTIMATED OCTOBER 2017



PARK CONSTRUCTION IMPACTS

- THE PROPERTY WILL BE FULLY CLOSED DURING CONSTRUCTION
- CONSTRUCTION WILL OCCUR ON WEEKDAYS, UNLESS WEATHER CONDITIONS FORCE ADDITIONAL SATURDAY HOURS TO MEET SCHEDULE
- SIDEWALKS AROUND PROPERTY MAY BE CLOSED TEMPORARILY FOR ADJACENT INSTALLATION AND/OR STAGING
- L STREET MAY NEED TO BE CLOSED BRIEFLY, OR TRAFFIC STOPPED WITH A FLAGGER, TO ACCOMMODATE A SANITARY/SEWER CONNECTION

